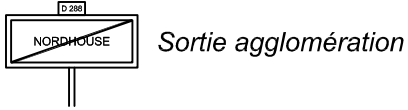
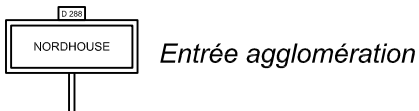
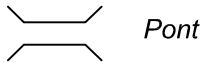
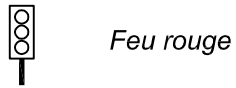
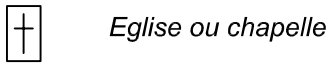


# Règles de navigation

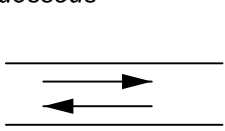
Le road book se lit en suivant les N° de case dans l'ordre croissant on arrive du point et on se dirige vers la flèche



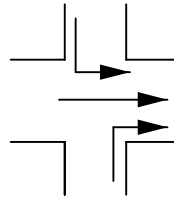
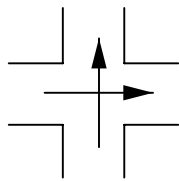
SRP Suivre la route principale



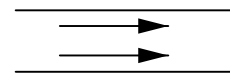
Règle de navigation sur carte on ne passe qu'une seule fois sur les points ou flèches sans jamais se croiser, voir ci-dessous



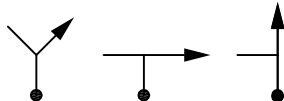
INTERDIT



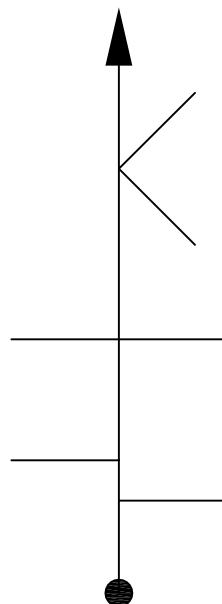
AUTORISE



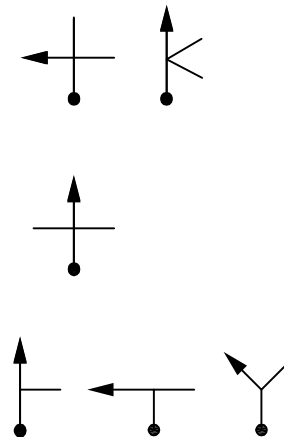
Règle de navigation fléché Allemand ou arête de poisson.



Sur le terrain  
ou la carte



Représentation  
sur le road book



Sur le terrain  
ou la carte